

# Nature News

Quarterly Newsletter of the Cadillac Area Land Conservancy



Fall 2017

Where does the time go?! As summer turns to fall it's time for our annual meeting.

## **CALC Annual Event** - *celebrating over 2,000 protected acres!*

**October 14th, 1:30 - 4:00**

Fellowship Hall, Cherry Grove Church of the Nazarene,  
8450 S. 29 Road, Cadillac (corner of M-55 west and South 29 Road)

### Featuring:

- Program on status of Black Bears in Cadillac area by DNR wildlife specialist Vernon Richardson
- Light refreshments
- Walking tours at the Thomas and Marguerite Harris easement
  - \* Bear Country Tour
  - \* Fall Trees - Color Tour



The new Thomas and Marguerite Harris easement was featured in our last newsletter. Their 135 acres are prime bear habitat and their stately woodlands provide some great walking trails with relics of an old logging camp and railroads. Bear sightings are not guaranteed but the autumn leaves should be showing their colors.



Photos by Jim Higgins

## Leave a Legacy

This is also the time your mail box fills with requests for donations. Ours will be among them. Please think about the future of this beautiful corner of the world and do your part to help protect it—to keep our homes near natural spaces, our waters clean, our wildlife flourishing and our children connected to nature.



## Bee Day

Hope you enjoyed a little taste of honey on August 19th—National Honey Bee Day. Did you know that bees will visit more than 2 million flowers to produce just one pound of honey?



Honey bees account for nearly 80% of the crop pollination across the US and are active somewhere in North America every month of the year. Crops need bees for pollination. Bees need plants to pollinate. Plants

need soil to grow. Soil is a part of land. We protect that land. Sweet!

## Blueberry Event

We hope you paid a visit to the Harrietta Blueberry Festival on Saturday, August 5<sup>th</sup>. CALC had a booth and gave tours of the Oliver Family Nature Preserve on the outskirts of Harrietta. Thanks to our volunteers for helping us publicize our mission.



Big smiles from these visitors to the Oliver Family Nature Preserve. Volunteer Mary Crisenbery led the tour.

## Opportunity



We are seeking a smart and creative volunteer to work with our current webmaster designing and maintaining our web site. We will show you how to use WordPress, and then hope to eventually let our current longtime webmaster hand over the reins and retire. Check out our web site at <http://calc-landtrust.org>

If you're ready to try something new and develop new skills, call and leave a message at (231) 775-3631.

## Win! Win!

What do you do to get rid of an invasive species?  
What do you do when you have money to spend?  
What do you do when you have willing volunteers?

You have a volunteer day to rid the Carl T. Johnson Nature Preserve of its Autumn Olive!



Autumn Olive (*Elaeagnus umbellata*) is ubiquitous.

It was introduced as an ornamental, for wildlife habitat, as windbreaks and to restore deforested and degraded land. It's drought tolerant and grows well in a variety of soils. Unfortunately it threatens native ecosystems by out-competing and displacing native plants, creating dense shade and interfering with natural plant succession and nutrient cycling.

CALC board members Tom Anderson and Larry Copley will organize a work-day and will be taking advantage of a cost-share for expenses with the Wexford County Conservation District. The great volunteers are primarily neighbors of the preserve who enjoy recreating there. Thanks to all for working to improve this preserve.



**Cadillac Area**  
**community foundation**  
Where *You* Make the Difference

## Thanks for Protecting Our Future

There are many ways of supporting CALC. The forward thinking people listed below have made donations to our endowment fund held by the Cadillac Area Community Foundation. The purpose of the endowment fund is to build capital so we can use the income to protect our easements FOREVER.

- Bruce Baker
- Rod and Mary Bellows
- Robert and Julia Borak
- Homer and Esther Boughner
- Sperry and Gertrude Claypool
- Charles and Leta Mae Corwin
- Bill and Wilma Gaylord
- Fred and Sue Goetz
- Richard Hansen
- Thomas and Marguerite Harris
- Denise and Floyd Justus
- David and JoAnne Lawless
- Frederick and Patricia Lawless
- James and Sarah Lawless
- Mike and Kathryn Lueder
- Mark McCartney
- Dave and Kathy McCurdy
- Edwin and Barbara Patterson
- Pat and Leo Paveglio
- Gary Pomeroy
- Mariette Potvin
- Cheryl Rock and Jeffrey Dysart
- Cliff and Pat Sjogren
- Andy and Marietta Smith
- Fred and Sharon Sprague
- Jerry and Marlene Stilson
- Kenneth Walker

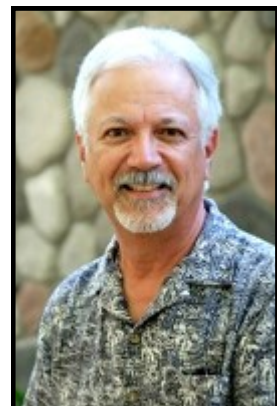
The foundation also brings great benefit to our community. Check it out—

<http://www.cadillacfoundation.org/>

## Meet one of our new board members

### Marco Menezes

Marco was raised in South Florida where he graduated with honors from the University of Florida with degrees in real estate and urban land studies. He headed north to Michigan and earned an impressive magna cum laude law degree from the T.M. Cooley Law School in 1990.



He put his degree to work as Wexford County Chief APA, in the local law firm of Herrinton, Herrinton, Tacoma, Menezes & Smathers and then a solo law practice. He also served as a probate judge in the 18th district (Mecosta and Osceola Counties). We certainly welcome his considerable legal experiences.

Marco, very service oriented, has served on many boards including the Wheatland Music Org., Hope Network and, now, CALC. When asked why he agreed to serve on our board, he responded:

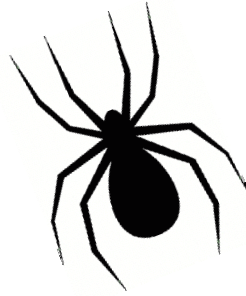
*"I was inspired by Jack London's writings as a boy growing up in Florida, drawn by the lure of the North Woods to Michigan as a young man. Our self-built home is on 125 wooded acres bisected by a trout stream. We are lifelong, unapologetic, environmentalists and outdoor folk with deep, abiding love/respect for the land and nature. These values are in dire need of preservation and we strive daily to pass them along to our grandchildren. The Conservancy provides great opportunities in retirement to apply lifelong training and experience to advance those values."*

Married for 45 years, Marco and his wife Kathy have two daughters and two granddaughters (4 and 7) who, luckily, live right next door.



## Amazing Spiders

Spiders are the world's top predators, eating 400-800 million metric tons of creatures (mostly plant-eating insects) every year!



Antarctica is the only continent in the world where you can't find them.

The strongest material in the world is spider silk. Scientists haven't been able to recreate it.

The blood of a spider is light blue in color.

There are at least 40,000 species of spiders in the world.

Our ruby-throated hummingbirds use spider webs to make their nests.

Daddy longlegs are not spiders.

Sadly, arachnophobia is one of the most common phobias.

### BOARD OF DIRECTORS

Larry Copley, *Chair*  
Steve Cunningham, *Vice-Chair*  
Marco Menezes, *Secretary*  
Fred Sprague, *Treasurer*  
Tom Anderson  
Rose Denny  
Tasha Lapinski  
Marty Williams

### VOLUNTEER POSITIONS

Pete Eliot, *finance*  
Richard Harvey, *monitoring*  
Bob Hess, *preserves*  
Vicki Long, *website*  
Pat Paveglio, *newsletter*

## Thank You!

- Thanks to former CALC Board Member, Craig Pullen of Gosling Czubak in Traverse City, for his survey work on the Kohn Family Preserve on the Manistee River.

*I recognize the right and duty of this generation to develop and use the natural resources of our land;  
but I do not recognize the right to waste them, or to rob, by wasteful use, the generations that come after us.*

~Theodore Roosevelt

### Mission Statement

*The Cadillac Area Land Conservancy protects ecologically significant, scenic, and farm lands for current and future generations and fosters an appreciation of the natural environment in Missaukee, Osceola, Wexford and northern Lake and Mason Counties.*

CADILLAC AREA LAND CONSERVANCY  
124 1/2 NORTH MITCHELL STREET  
SUITE 115  
CADILLAC, MICHIGAN 49601

www.calc-landtrust.org  
calc@calc-landtrust.org

(231) 775-3631