

Nature News

Quarterly Newsletter of the Cadillac Area Land Conservancy



Summer 2013

A Sure Sign of Spring



For some folks a sure sign of spring is the first Robin on the lawn; for others it's the blooming of the Marsh Marigold or Hepatica. At CALC we know it's spring when Mark Johnson's Agriscience & Natural Science Class heads to Waldeck Island for some house cleaning—Wood Duck house cleaning that is.

After what seemed like a never-ending winter the weather finally broke, and on a partially sunny day in April, Mark and three eager students from the Wexford-Missaukee Career Technical Center headed to our Waldeck Island Preserve to clean and refurbish Wood Duck nest boxes.



Armed with a power drill, ladder and a fresh bag of cedar shavings the students made short work of opening each nest box, cleaning out the debris and putting a new bed of cedar shaving in the bottom. It was evident from the debris that ducks had occupied several boxes the previous spring, while several had served as homes for the ever-present squirrels.

As the students were working, they were joined by the preserve director Vicki Long and volunteer Jerry Strejc. Vicki and Jerry tagged dead trees on the preserve that need to be removed. Forester Paul Drysdale reviewed the tagged trees for compliance with the preserve's forestry and management plan. Mark then volunteered to return to Waldeck in the near future with more Career Technical Center students to assist Vicki and Jerry in this clean-up.

Reporter Jeff Broddle of the *Cadillac News* came along with the students and took lots of pictures. We hope you saw the pictorial story in the paper.

As always, our thanks to Mark Johnson and his students: Austin Jensen of LeRoy, Jake Romanack of Tustin and Travis Musser of Luther.



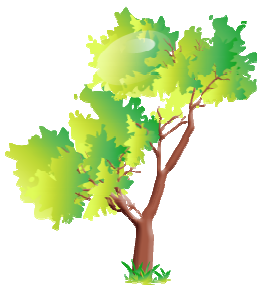


Save the Date

On Saturday, October 12th, the Wexford Conservation District will be holding a Forestry Field Day at the Eggle Farm in Clam Lake Township. The Eggle Family has been practicing best forest management practices for many years and the wagon tours of their forested property will showcase aspen, northern hardwoods and pine management. The morning tour is open to all ages.

For more information contact Kama Ross, District Forester, at kama.ross@macd.org or 775-7681.

(NOTE: CALC plans to have an information booth at this event.)



Annual Meeting

Last year's annual meeting featured a fascinating program on the Pine Marten; this year we're s-l-o-w-l-y planning a similar program on turtles! Stay tuned for details.



Open Spaces = Higher Prices

According to an article in the May 3rd *Wall Street Journal*, home buyers will pay a premium to live near open, undeveloped land.

A Colorado State University study of home prices compared 2,222 home sales from 1998-2011.

Homes in conservation developments with land set aside for open spaces sold for 29% more than homes in conventional residential projects.

"For a homeowner, this means that the value of their home will be greater just by being in a development with open space," Professor Reed says.

Creepy Crawlies



When we talk about preserving habitat for wildlife, we're usually thinking of four-footed, furry mammals, but the creepy, crawly insects and invertebrates play a vital role in nature. They too need a diversity of plants and ecosystems and are worthy of our protection. They pollinate, recycle, increase soil productivity, and are a valuable food source for others.



Did you know:

- Moths have over 2,000 scent detectors on each antennae.
- 70% of native solitary bees nest in the ground.
- One out of every four animals is a beetle.
- Insects see mainly in the ultraviolet.



Bees do have a smell, you know, and if they don't they should, for their feet are dusted with spices from a million flowers.



~ Ray Bradbury, from *Dandelion Wine*

THE Trail State!

Speaking of open spaces, Michigan has more than 12,000 miles of trails for snowmobiling, hiking, horseback riding, bicycling, and paddling. In his November 28th message, Governor Rick Snyder called for a "showcase trail" that would connect Belle Isle in Southeast Michigan with the Upper Peninsula's Wisconsin border. (We'd vote for that!)





Thomas L. Anderson

I grew up in the Wexford-Missaukee Area graduating from Cadillac High School in 1970. After receiving my B.S. degree from Western Michigan University in biology/chemistry, I worked for the USDA while taking a few graduate classes at Michigan State University, and then received a Pharmacy Degree from Ferris State University. As a pharmacist, I worked at Sault St. Marie War Memorial Hospital (1979-1981), Cadillac Mercy Hospital (1981-1983), and McBain Pharmacy (1983-2011, owner).

Growing up in Northern-lower Michigan, I have a great love and appreciation of the natural environment. I enjoy fishing, gardening, forestry, hunting, camping, and any physical presence in the out-of-doors.

My wife, Karen, and I have resided in Clam Lake Township for twenty-seven years, where we raised three daughters.

NEW FACES

Last issue you met
**Bob Hess and Brian
Maturen, two new
board members.**

This issue we're
pleased to introduce
you to three more -
**Tom Anderson,
Henry Cortez and
Tasha Lapinski
(VanDusen)**

Henry Cortez

I am a native of Muskegon, Michigan relocated to Cadillac upon retirement from The USAF after 26 years of service. I received a Diploma in Nursing - Hackley Hospital, a Bachelor's in Nursing - Coe College, a Master's in Nursing - American Sentinel University, and a Master's in Health Services Administration - New School of Social Research. I'm currently employed as the Operating Room Manager at Northwest Michigan Surgery Center in Traverse City.

I'm married to Carolyn and have four grown children, Lisa, Michael, Kristofer and Caryn.

For me the outdoor activities are four season. I enjoy hunting, skiing, golf, fishing, camping and travel. Having lived outside of Michigan for 26 years has made me appreciate the outdoors that this state offers on a no-fee basis. I first was exposed to land conservation through my three years on the Board of Directors with the Girl Scouts of Northern Michigan.



Tasha Lapinski (VanDusen)

I love northern Michigan so much that shortly after college I returned to live in the woods of Osceola County, less than 1/2 a mile from the farm I grew up on. I have a degree from Michigan State University and currently work for the Osceola-Lake Conservation District as the Michigan Agriculture Environmental Awareness Program (MAEAP) groundwater stewardship technician. I help farmers to lower their risk of ground and surface water pollution through a comprehensive review of farming practices. When I'm not busy with work I can be found outside taking care of my flock of chickens and foraging for wild edibles in the woods. Protection and conservation of our resources are important to me because they are what sustains our lives. Volunteering with the CALC seems a natural extension of this desire.





Tax Incentives

If you are a landowners considering protecting your property with a conservation agreement, you have until December 31, 2013 to take advantage of some significant tax incentives recently renewed by Congress. These incentives:

- Raise the deduction donor can take from 30% of their income in any year to 50%.
- Allow qualified farmers to deduct up to 100% of their income.
- Increase the number of years over which a donor can take deductions from 6 to 16 years



“Our whole community wins when thoughtful landowners conserve their land this way, protecting wildlife habitat, clean drinking water, scenic landscapes, recreational spaces, and productive agricultural lands,” said Vaughn Maatman, the Executive Director of the Land Conservancy of West Michigan.

~taken from *The Land Conservancy of West Michigan Summer 2013 Newsletter*



Summer afternoon—summer afternoon; to me those have always been the two most beautiful words in the English language.

~ Henry James

CALC BOARD OF DIRECTORS

- Larry Copley, Chair
- Fred Sprague, Vice Chair
- Margo Copley, Secretary
- Lindsey Hall, Treasurer
- Tom Anderson
- Henry Cortez
- Ruthann French
- Richard Harvey
- Bob Hess
- Steve Kalisz
- Brian Maturen
- Nathan Piwowarski
- Craig Pullen
- Tasha VanDusen
- George L. Rock, Director Emeritus

OTHER VOLUNTEERS

- Garth Aslakson, Easement Baselines
- Vicki Long, Website
- Kate Miller, Service Projects
- Pat Paveglio, Newsletter
- Chris Schumacher, Corridor Marketing

Mission Statement

The Cadillac Area Land Conservancy protects ecologically significant, scenic, and farm lands for current and future generations and fosters an appreciation of the natural environment in Missaukee, Osceola, Wexford and northern Lake and Mason Counties.



124½ NORTH MITCHELL STREET
SUITE 115
CADILLAC, MICHIGAN 49601

www.calc-landtrust.org
calc@calc-landtrust.org

(231) 775-3631