

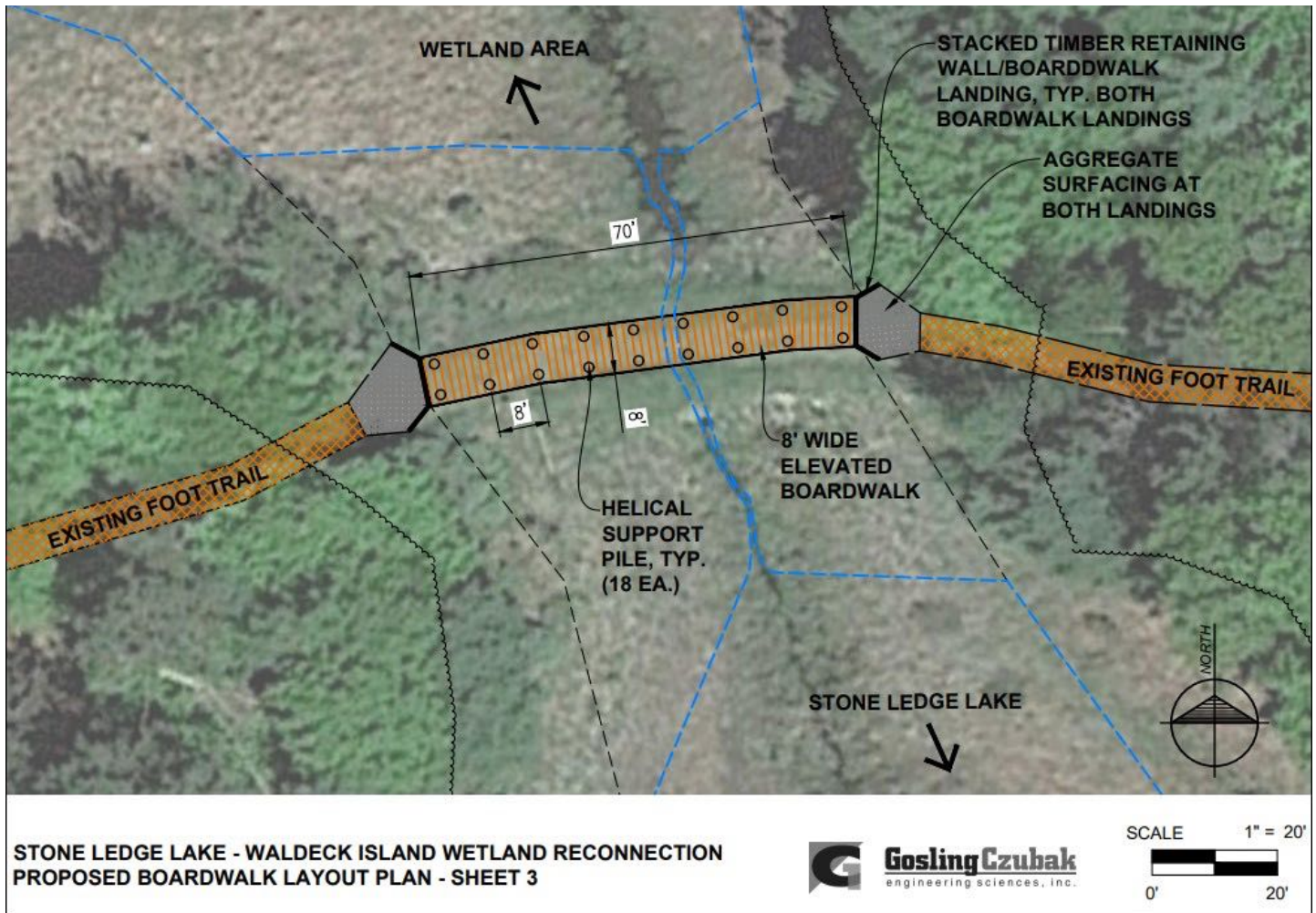
Nature News

Newsletter of the Cadillac Area Land Conservancy



Summer 2022

Cadillac Area Land Conservancy receives DNR grant to enhance fisheries habitat and public access at Waldeck Island Preserve!



Michigan DNR has awarded a grant to the Cadillac Area Land Conservancy that will enhance fisheries habitat and public access at Waldeck Island Preserve.

The Stone Ledge Lake Fisheries Restoration Project will remove the earthen berm currently separating the lake from the adjoining wetland. This will restore the natural free-flowing hydrologic connection between the wetland and lake. Public access for hiking will be maintained and improved by replacing berm with a modern boardwalk between the preserve entry area and the island.

The schedule for the project calls for initial surveying, final engineering, permitting, and bid preparation to be completed during the remainder of this year. Project implementation will take place in 2023 with a fall wrap up planned.

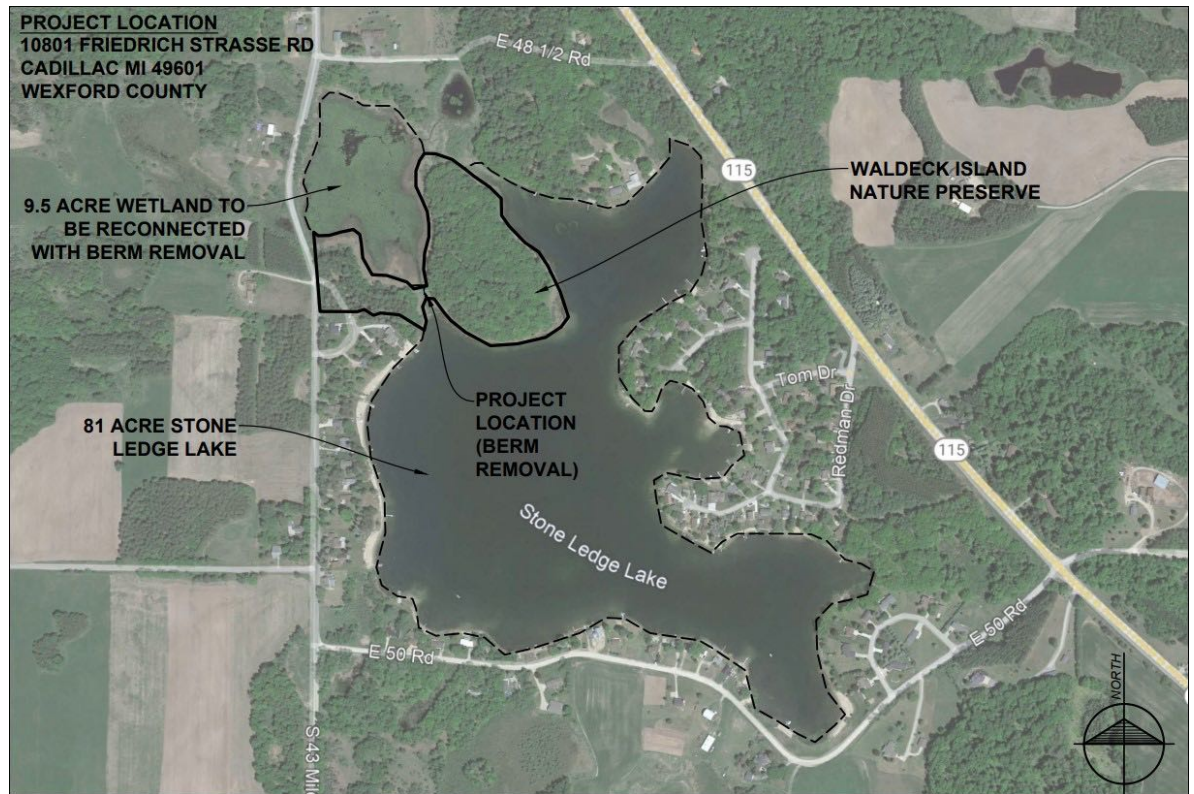
A big thank you to Land Trust Alliance who provided a grant for conceptual development work.

(More information on article continued on next page.)



This map details the location of the grant project in relation to Stone Ledge Lake. 9.5 acres of aquatic habitat will be reconnected to the lake providing enhanced reproductive opportunity for fish and other aquatic species.

Waldeck Island will become more accessible to the public via a modern boardwalk between entry area and island.

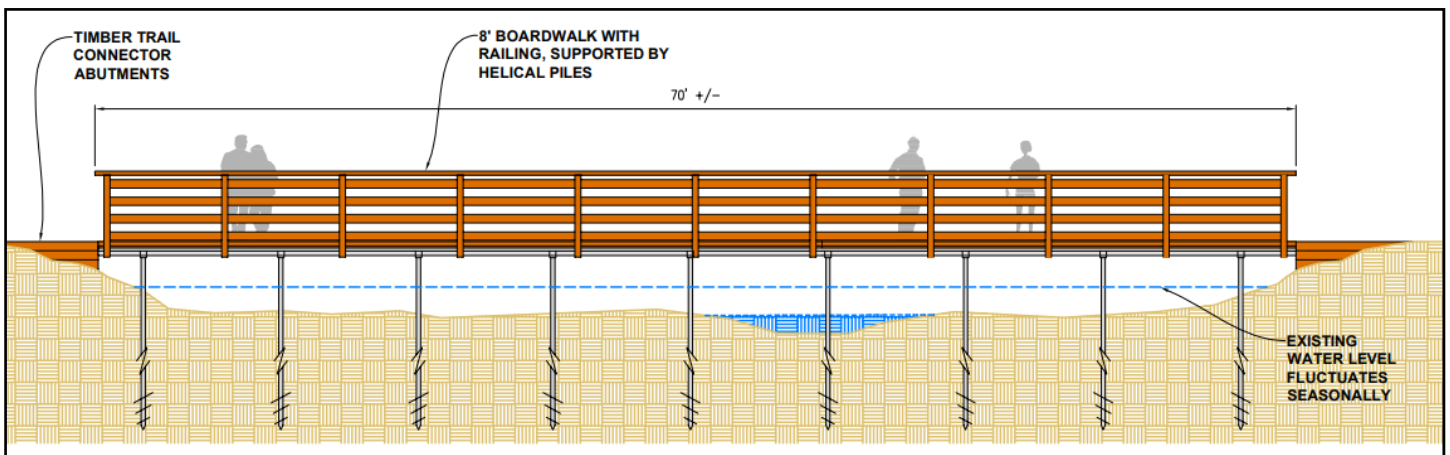


The Michigan DNR grant required that CALC provide 10% of the total amount needed in matching funding. \$12,500 has been raised through gifts donated by the following:

Richard Hansen (\$5000 Challenge Grant)

Meeting the Challenge: Tom & Diane Rensberry, Marco & Kathy Menezes, Kerry Sprigg, Vicki & Matt Long, Chris & Julie Gentry, Cyndy & Dave Foley, Steve & Ria Cunningham, Norma & Steve Roelfsema, Sue & Scott Conradson, Shari Spoelman & Gary VanHouten, Marty & Amber Williams.

Thank you to all who donated to make this grant match!



Helical piles used to support the 8' boardwalk provide a low impact construction method. Placement of the walkway allows for seasonal fluctuations of water levels. Besides safe island access the boardwalk also will serve as a very nice lake and wetland viewing location.



DNR purchase, facilitated by CALC, will allow former Fox Farm to become public land

When the time came for Rick and Mike Deuell to sell their property – property that had been owned by their family for 100 years - they had a desire to ensure it remained in its current natural condition. Preferably in a way the community could enjoy as they always had growing up.

A logical partner in this goal was the state DNR as the family property of 22 acres nestled between the Mitchell State Park and Cadillac's Kenwood Park. Since their grandparents had sold 58 of the original 80 acre farmstead to the DNR in the 1960s, selling the last part to the state made sense. The brothers reached out to CALC to help facilitate this sale.



Rick Deuell discusses the history of the family's farm with board member Sam Hogg.

The property's natural and historic location made it imperative to CALC's board that this parcel needed to be included as part of the state park. The group vigorously advocated, facilitated, and endorsed the state's acquisition of the site which led to a purchase agreement and soon it will be a wonderful part of Mitchell State Park.

Years ago the family's home was also the site of Wexford Fox Ranch, a fur farm which produced fox furs that were sold all over the world. Over the years as such enterprises fell out of favor the farm discontinued but the family still maintained their home there. The Deuell family is pleased their former home will be enjoyed by future generations. They and CALC are looking forward to seeing how plans develop for the site.



Rick and Mike Deuell at their boyhood home with Mike's wife, Barb.

Thanks Dan!

Thank you to Dan Valley who was able to mow at Johnson Preserve to help with invasive species.



To contact the CALC Office call (231) 775-3631
Email: calc@calc-landtrust.org
Mail: 124 1/2 N. Mitchell St., Ste. 115, Cadillac 49601
Visit our webpage at www.calc-landtrust.org

Many thanks to our CALC 2022 Monitoring Team!

A shout out to the volunteers who have given of their time to ensure that the conservation values protected through CALC easements are being maintained.

Monitoring chair: Richard Harvey

Monitoring co-chair: Steve Cunningham

Sue Conradson
Cyndi Foley
Chris Gentry
Marco Menezes
Fred Sprague

Steve Cunningham
Dave Foley
Sam Hogg
Shari Spoelman
Marty Williams

First time monitoring easements this year!

Pam Anderson
Ezra Bunce
Dave Guest
Lucas Johnson
Vicki Long

Alan Anderson
Dave Bunce
Jan Guest
Keenan Cooper
Matthew Long

Thank You!



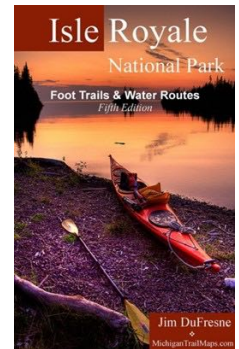
YOU ARE INVITED TO
Cadillac Area Land Conservancy's
ANNUAL MEETING

Sunday, October 9, 2022 - 2:00 p.m.
Presented at the Carl T. Johnson Fish & Hunt Club
Featuring outdoors author Jim DuFresne

Please join us for CALC's Annual Meeting and hear what the conservancy has going on in local land preservation. After the short meeting our guest speaker is well known outdoor author Jim DuFresne who has deep-rooted passion for two things, sunsets and shorelines, having lived Alaska and Michigan all his life. He graduated from Michigan State University with a journalism degree and took his talents to Juneau, Alaska as outdoors and sports editor of the *Juneau Empire* and won a national award from the Associated Press. Jim wrote his first book when he spent a winter in New Zealand backpacking.

His work includes:

The Trails of M-22 and Porcupine Mountains Wilderness State Park, MichiganTrailMaps.com
Backpacking in Michigan and 12 Classic Trout Streams in Michigan: A Handbook for Fly Anglers,
University of Michigan Press
Isle Royale National Park: Foot Trails & Water Routes. The guide to the wilderness areas of Isle Royale
has been in publication in various editions for almost 40 years and today is known as the
"backpacker's bible" to Lake Superior island.
Tramping in New Zealand, Lonely Planet
Alaska, Lonely Planet
Hiking in Alaska, Lonely Planet
50 Hikes In Michigan, Backcountry Publications



RSVP by calling 231-775-3631 or email calc@calc-landtrust.org. Please leave your name, email, and how many will be joining with you. An email reminder will be sent prior to the event. There is no cost to attend.

Harris estate supports CALC's perpetual land preservation

Tom Harris' estate has provided a \$50,000 bequest to CALC's endowment fund with the Cadillac Area Community Foundation. The endowment fund, along with donor gifts and other investment income, provide needed funding that enables CALC's perpetual mission of land conservation. Tom was a former CALC board member, a conservation easement partner, and an avid supporter of the organization.

We are grateful that Tom remembered us so well and for his enduring support.

Volunteers Needed!

There are many ways you can help. Give us a call,
(231) 775-3631, to discuss opportunities.

IN MEMORY OF PATRICIA LAWLESS

Cadillac Area Land Conservancy lost another friend in March. The daffodils and forsythia bloomed brilliantly around the family cottage this spring in memory of her careful touch. The cottage is on Sanborn Creek next to their 134 acre conservation easement property. It was Pat's favorite place for family gatherings, and now it feels a bit empty. It is where the family will miss her most.

BOARD OF DIRECTORS

Steve Cunningham, *Chair*
Marco Menezes, *Vice-chair*
Sam Hogg, *Secretary*
Marty Williams, *Treasurer*
Sue Conradson
Cyndy Foley
Dave Foley
Shari Spoelman

VOLUNTEER POSITIONS

Pete Eliot, *investment*
Richard Harvey, *monitoring*
Open Position, *newsletter*
Marty Williams, *social media*
Eric Zeitz, *website designer*
EXECUTIVE DIRECTOR
Chris Gentry
OFFICE MANAGER
Norma Roelfsema

Mission Statement

The Cadillac Area Land Conservancy protects ecologically significant, scenic, and farm lands for current and future generations and fosters an appreciation of the natural environment in Missaukee, Osceola, Wexford and northern Lake and Mason Counties.